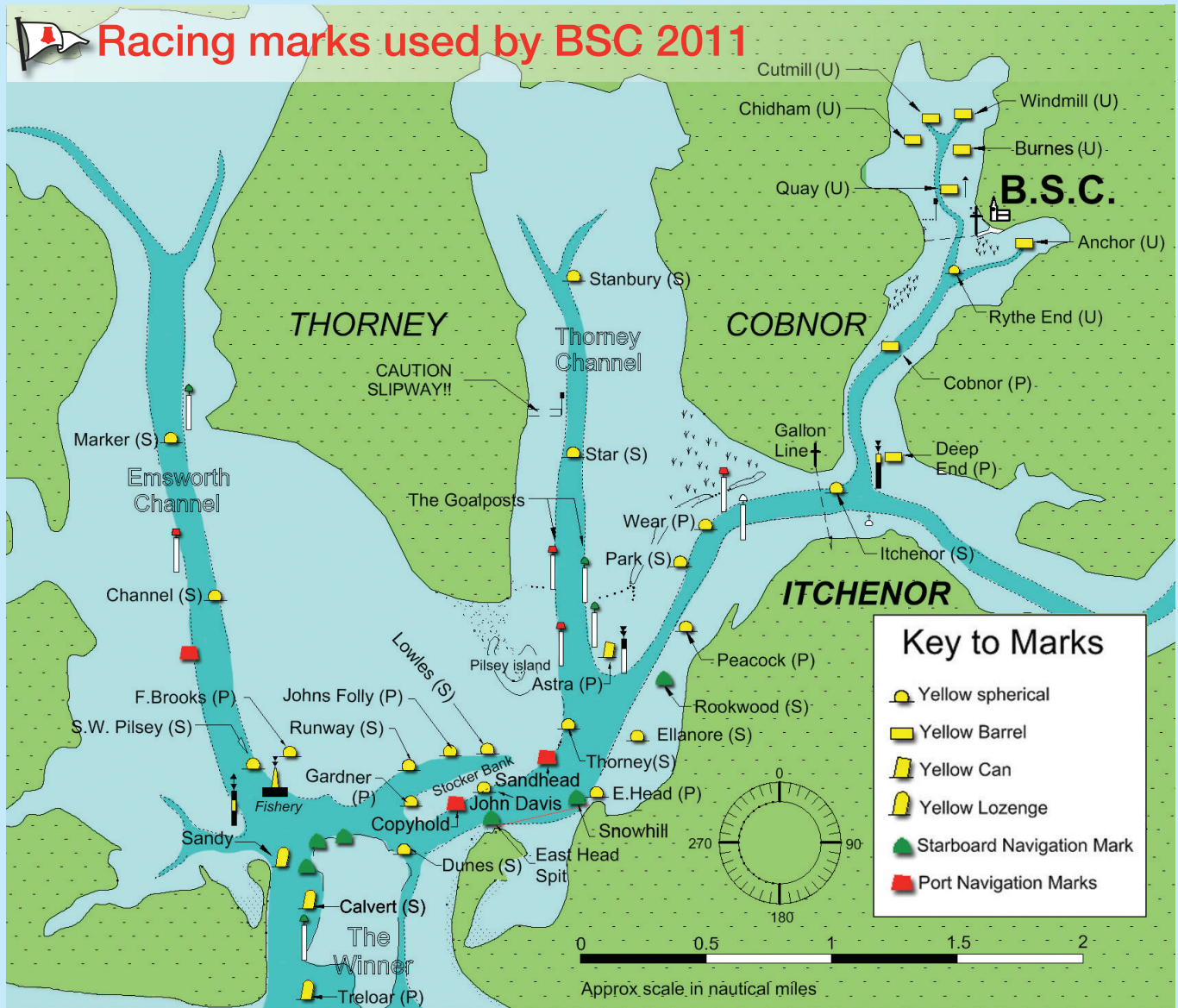




# Racing marks used by BSC 2011



- A Astra (P)
- B Stanbury (S)
- C Cobnor (P)
- D Deep End (P)
- E Ellanore (S)
- F Freddie Brooks (P)
- G Gardner (P)
- H East Head (P)
- I Itchenor (S)
- J Johns Folly (P)
- K Rookwood (S)
- L Lowels (S)
- M Marker (S)
- N Channel (S)
- P Park (S)
- R Runway (S)
- S Star (S)
- T Thorney (S)
- U Dunes (S)
- V Calvert (S)
- W Wear (P)
- Y SW Pilsey (S)
- Peacock (P)
- Treloar (P)
- John Davis (P)

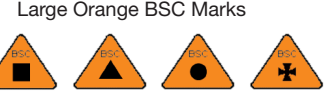
### Local Marks

- an Anchor (U)
- br Burnes (U)
- cu Cutmill (U)
- ch Chidham (U)
- wi Windmill (U)
- re Rythe End (U)
- qu Quay (U)

### Finish Line

- Q Quay Line
- X Cobnor Line
- Z Committee Boat

### Orange Inflatable



Green Symbols = Marks to Starboard

Red Symbols = Marks to Port

### The Thorney Channel

'Goalposts' mark the safely navigable gap in the potentially hazardous run of 'dragon's teeth' across the Channel - similarly, the Bosham Channel Markers to the north of Bosham quay. For the purposes of our races, they are marks of the course, and boats must pass between them whenever the course requires south-to-north/north-to-south passage along Thorney and/or Bosham Channels.



The Thorney Channel 'Goalposts'



Bosham Channel Markers